

Product Data Sheet

EF-BC3G-26 Range
2G/3G/4G Easy-Fit Antenna

C/Note	Doc Issue	Date	Approval
01019	1	04.10.13	J.J.

Mobile Broadband

2G/3G/4G Easy-Fit Antenna



EF-BC3G-26 Range

7 bands - 700MHz LTE, Quadband cellular, 3G UMTS, AWS, LTE / WIMAX 2.6GHz

Discreet adhesive pad fitment

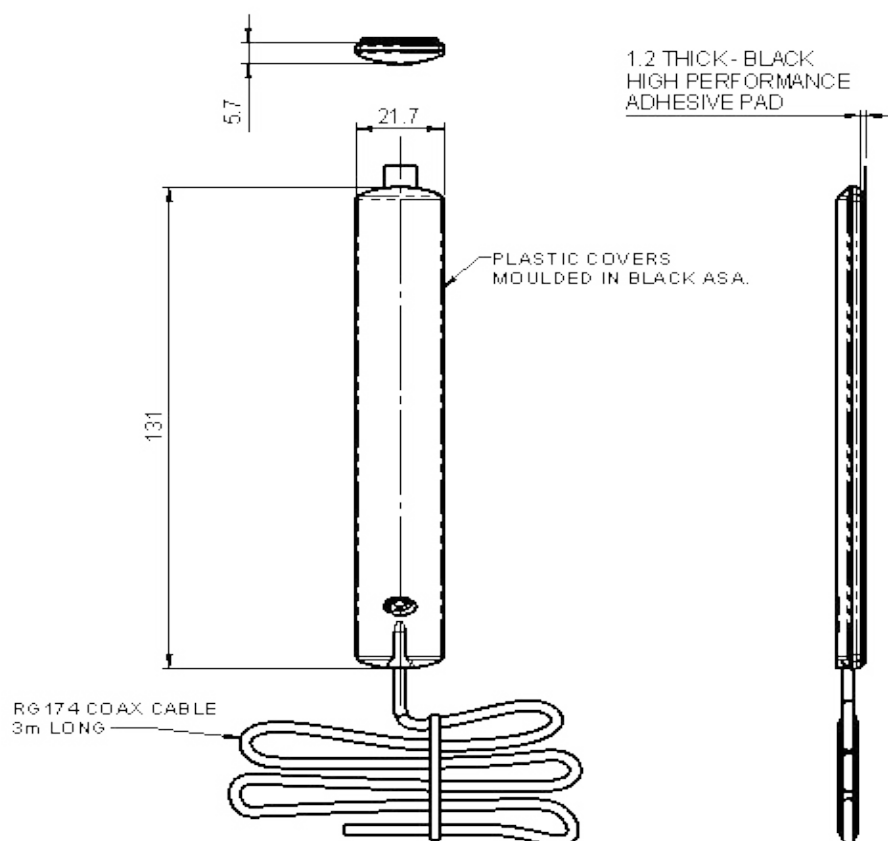
Suitable for mounting to plastic or glass

EF-BC3G-26 is a range of highly efficient and portable antennas for 2G/3G/4G modems and datacards. These paddle style antennas are easily positioned on a device housing or vehicle windscreen using the supplied automotive industry grade adhesive pad.

The antenna is ultrawideband and ground plane independent making it ideal for global machine-to-machine and mobile data applications. Covering 698-960 / 1710-2170 / 2396-2700MHz the EF-BC3G-26 is designed to support the full range of 2G/3G and 4G frequencies globally.

The antenna is constructed from weather resistant plastic and is suitable for use in semi-exposed scenarios.

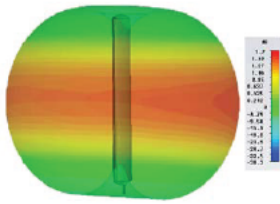
Technical Drawing



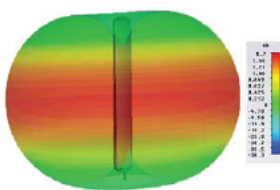
Mobile Broadband

2G/3G/4G Easy-Fit Antenna

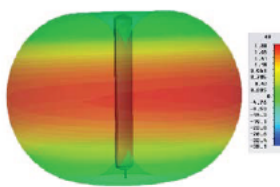
3D Plot (700 MHz)



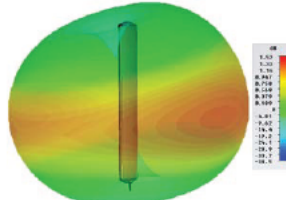
3D Plot (850MHz)



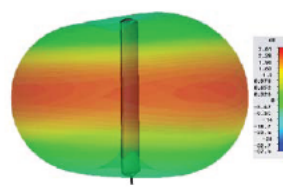
3D Plot (900MHz)



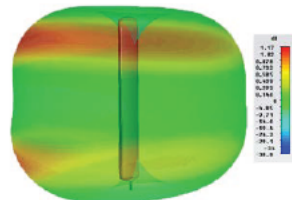
3D Plot (1800MHz)



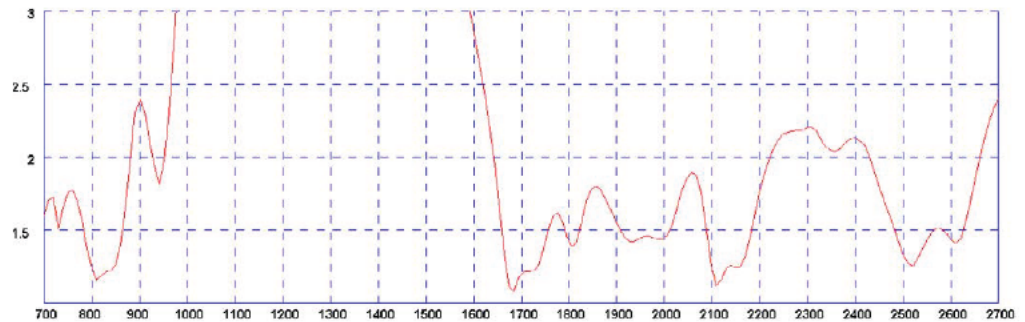
3D Plot (1900/2100 MHz)



3D Plot (2600MHz)



Typical VSWR*



* VSWR measured with 0.5m of RG174 Cable

Part No.		EF-BC3G-26-3FAKRAD	EF-BC3G-26-3SP
Electrical Data			
Frequency Range (MHz)		698-960, 1710-2170, 2396-2700	698-960, 1710-2170, 2396-2700
Operational Band		LTE 700, GSM850 / CDMA850, GSM900, GSM1800, PCS1900, 3G UMTS, AWS, LTE/WIMAX2600	LTE 700, GSM850 / CDMA850, GSM900, GSM1800, PCS1900, 3G UMTS, AWS, LTE/WIMAX2600
Typical VSWR		<2.5:1	<2.5:1
Peak Gain: Isotropic		2dBi	2dBi
Compared to 1/4 wave		0dB	0dB
Polarisation		Vertical	Vertical
Pattern		Omni-directional	Omni-directional
Impedance		50Ω	50Ω
Max Input Power (W)		25	25
Mechanical Data			
Dimensions (mm)	Length	131 (5.16")	131 (5.16")
	Width	21.7 (0.85")	21.7 (0.85")
	Thickness	7 (0.27")	7 (0.27")
Material		ASA	ASA
Operating Temp (°C)		-30° / +70°C (-22°/ 158°F)	-30° / +70°C (-22°/ 158°F)
Colour		Black	Black
Mounting Data			
Type		Automotive industry grade adhesive pad	Automotive industry grade adhesive pad
Cable Data			
Type		RG174	RG174
Diameter (mm)		2.6 (0.10")	2.6 (0.10")
Length (m)		3 (10')	3 (10')
Termination		FAKRA D Jack*	SMA Plug*

* Other connectors available

Panorama Antennas Ltd
Frogmore, London, SW18 1HF, United Kingdom

T: +44 (0)20 8877 4444
F: +44 (0)20 8877 4477

E: sales@panorama-antennas.com
www.panorama-antennas.com

Waiver: The data given above is indicative of the performance of the product/s under particular conditions and does not imply a guarantee of performance. These specifications are subject to change without notice.

Copyright © Panorama Antennas Ltd. All rights reserved.

PANORAMA  ANTENNAS